

Contents

Contents.....	1
Common information	1
Main window	2
Menu: File – Save.....	2
Menu: File – Close	2
Menu: Settings.....	3
Command button colour foreground	3
Command button colour background	3
Checkbox data grid.....	3
Command button colour data grid.....	4
Edit box sampling interval	4
Command button erase limits.....	4
Data view	4
Interface port	4
Menu: Data view	5
Menu: Start.....	5
Menu: ?	5
Command button OK.....	5
Command button system info...	5

Common information

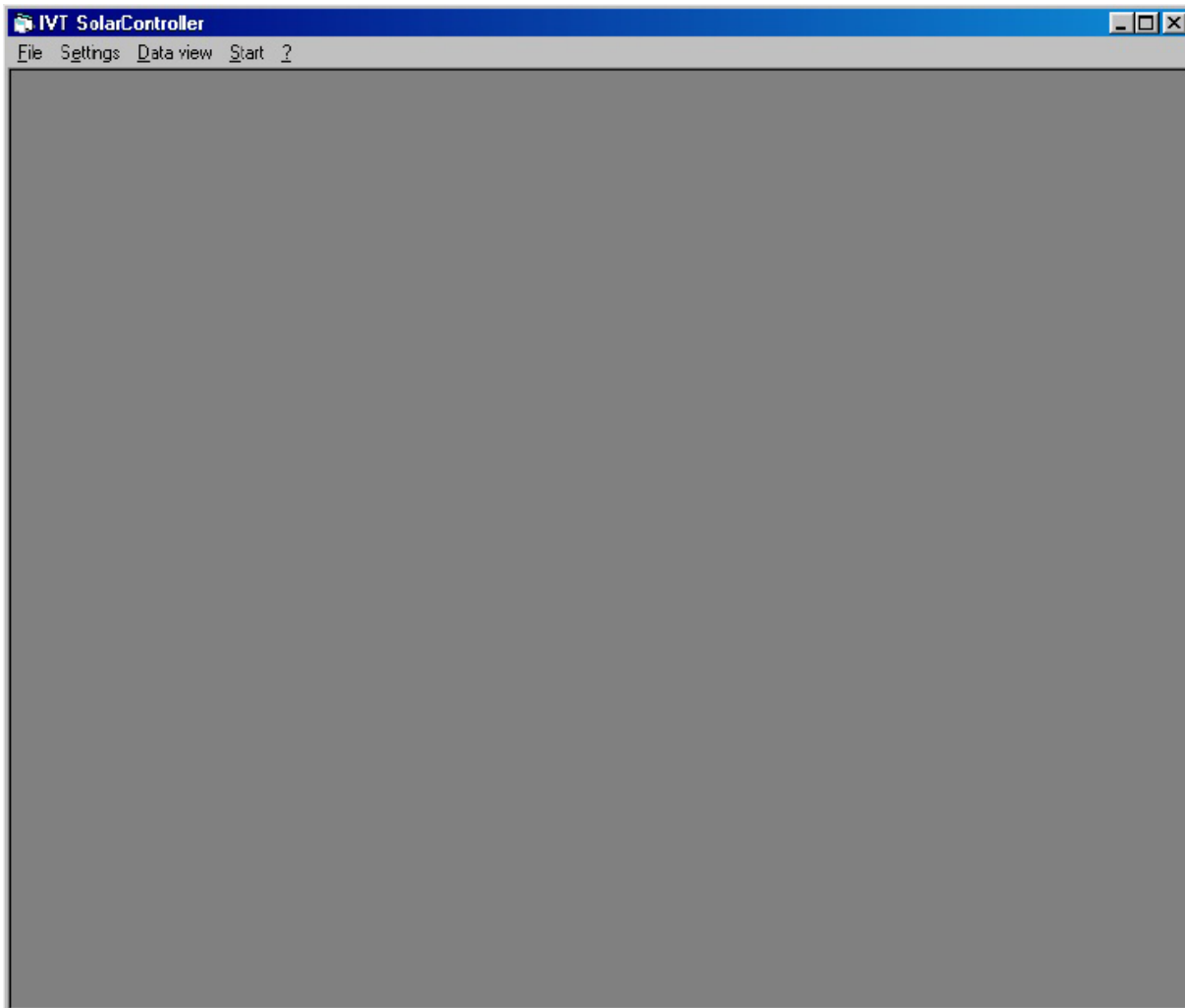
The program is used to visualize and to store the operating data of the solar charge controller. The operating data is transmitted via the serial interface and it is displayed in numerical and graphical manner. The operating data can be stored optionally in file in the csv format. Later the operating data can be evaluated with Excel or Wordpad.

The following data will be monitored:

- Charging voltage (current)
- Charging voltage (minimum)
- Charging voltage (Maximum)
- Charging current (current)
- Charging current (Minimum)
- Charging current (Maximum)
- Temperature (current)

The minimum and the maximum can be erased. The settings of the user (e.g. colours, etc) are stored automatically by closing the application. They will be loaded automatically by the next start of the application.

Main window



After starting the software, the main window appears. The following commands can be selected:

Menu: File – Save

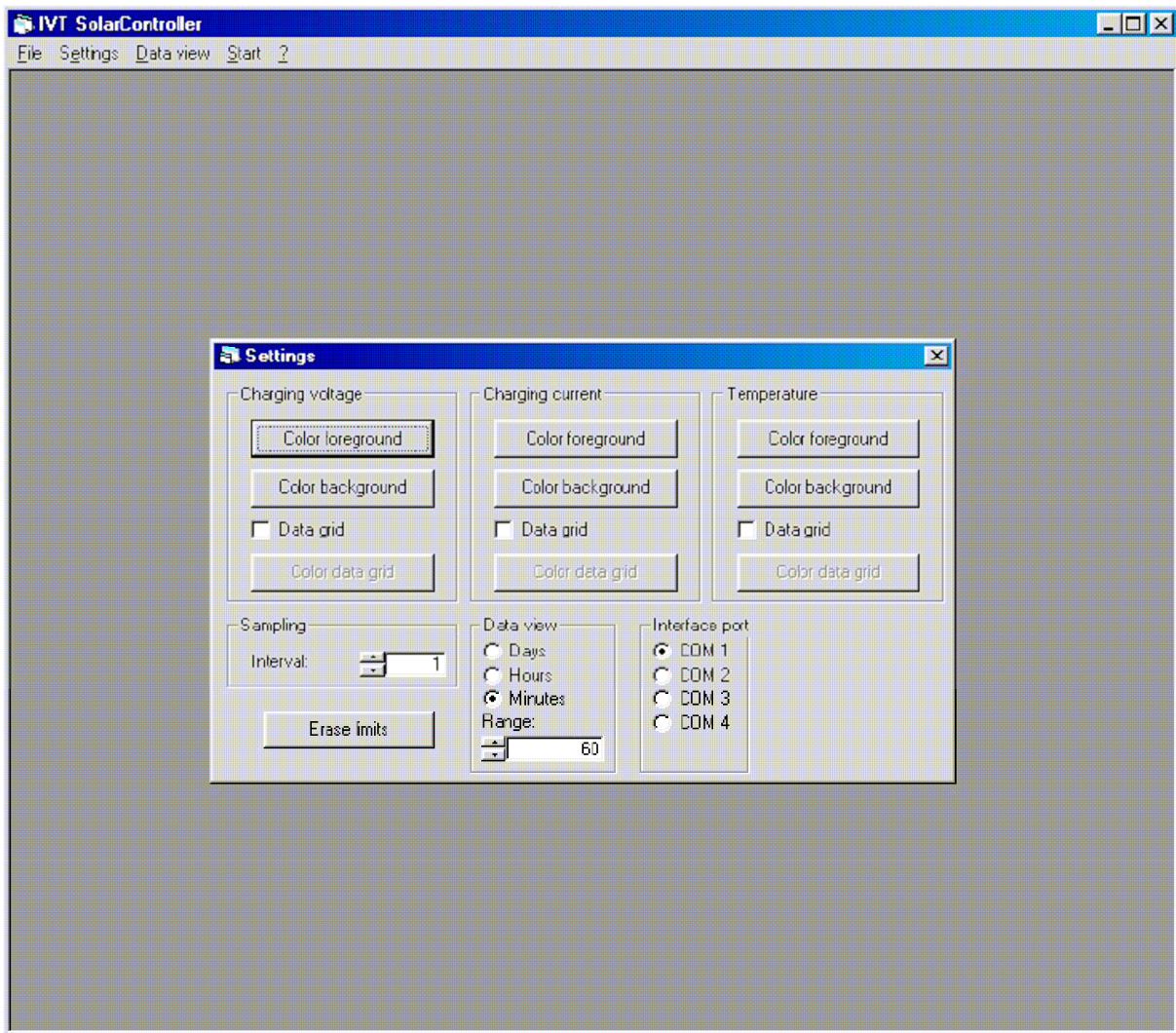
By using this menu option a dialog appears, in which a file can be selected. In this file the operating data is stored. If a file is selected, the menu option is marked with a small hook. Pressing the command button again disables storing. If no path is selected, the location of the file is the current working directory. The current filename is displayed in the title of the main window.

Menu: File – Close

By using the menu option, the current settings are stored, and the software is shut down.

Menu: Settings

By using the menu option, a dialog opens and the graphical surface can be changed.



Command button colour foreground

By clicking on this command button, a new dialog appears, with which the colour of the corresponding curve in the data view dialog can be adjusted. This setting will be saved and reloaded by the next start of the application.

Command button colour background

By clicking on this command button, a new dialog appears, with which the colour of the background of the corresponding diagram in the data view dialog can be adjusted. This setting will be saved and reloaded by the next start of the application.

Checkbox data grid

By clicking on this checkbox, a data grid in the corresponding diagram in the data view dialog can be activated or deactivated. This setting will be saved and reloaded by the next start of the application.

Command button colour data grid

By clicking on this command button, a new dialog appears, with which the colour of the data grid of the corresponding diagram in the data view dialog can be adjusted. This setting will be saved and reloaded by the next start of the application. This command button is activated if the corresponding data grid is activated.

Edit box sampling interval

With this edit box the sampling interval can be adjusted. The dimension of this input is in seconds. After the adjusted value is over, new data is requested from the solar charge controller and a new interval starts. The range of the interval is limited from 1s up to 3600 s. This setting will be saved and reloaded by the next start of the application.

Command button erase limits

By clicking on this command button, the minimum and maximum values in the solar charge controller will be erased.

Data view

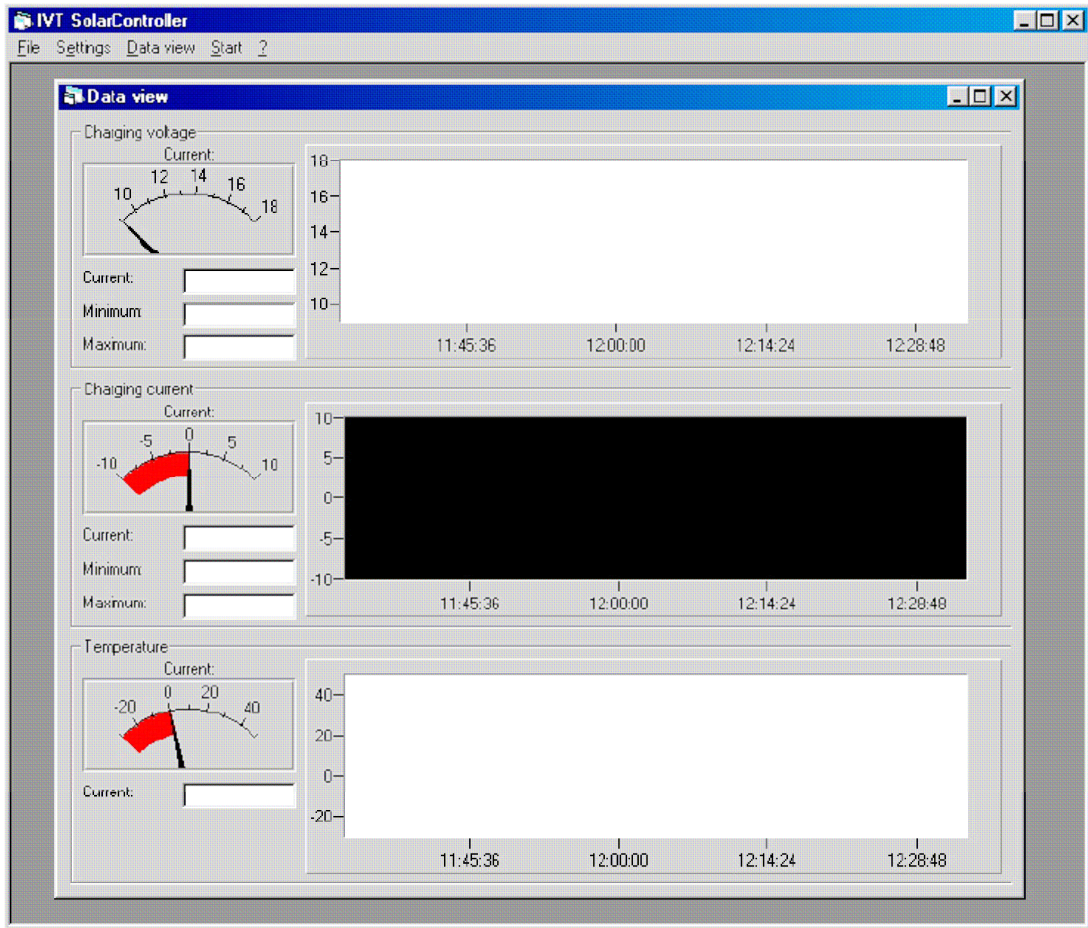
In this frame the time base of the diagrams of the data view dialog can be adjusted. The ranges days, hours or minutes are possible. The input of the number of ranges is limited from 1 up to 100. If the recording range exceeds the adjusted visible range, the display scrolls the data from right to left. This setting will be saved and reloaded by the next start of the application.

Interface port

With this option buttons the port is selected, which is connected with the solar charge controller. No other parameters are necessary, because other parameters are fixed. This setting will be saved and reloaded by the next start of the application.

Menu: Data view

By using this menu option the dialog data view appears:



The current operating data is displayed in numerical and analogue manner and in the diagram. There are no more command buttons.

Menu: Start

By using this menu option, the application starts to sample the operating data of the solar charge controller with the current settings. The caption of the menu option changes to „Stop“. If recording is activated, and the data file already exists, the user has to confirm to overwrite the old data, or has to choose a new file, or the recording breaks.

Menu: ?

By clicking on this command button a dialog with information about the software and the address of the hotline appears.

Command button OK

This command button closes the dialog.

Command button system info...

This command button opens a new dialog with system info about the PC.